

ADLER PLANETARIUM

# Special Events



Photo by Maypole Studios

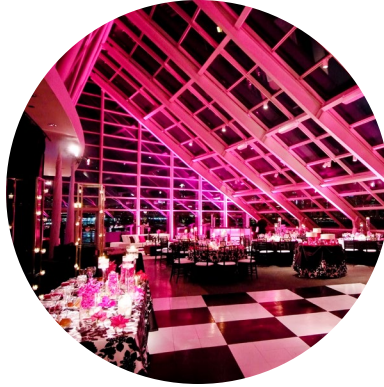
With magnificent views of Lake Michigan and Chicago's skyline, the Adler is the perfect venue for your special day. Whether you're hosting an intimate dinner for 50 people or an elegant reception for 1,200, your guests will be inspired by all that the Adler has to offer. Our experienced catering and event teams will help you design the perfect backdrop for your party.

---

# Capacity Quick Reference



**ENTIRE BUILDING**  
1200 Cocktail Reception



**DANIEL F. AND ADA L. RICE SOLARIUM**  
475 Cocktail Reception  
370 Seated Dinner  
320 Seated Dinner + Dance Floor



**NANCY A. PETROVICH SKYLINE TERRACE AND SUNDIAL PLAZA**  
500 Cocktail Reception

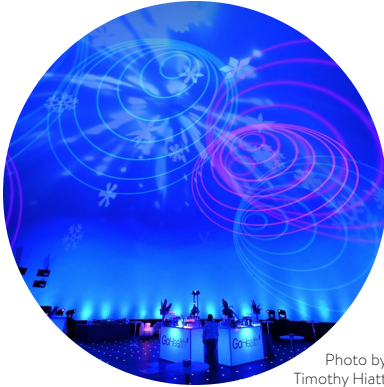


Photo by  
Timothy Hiatt

**GRAINGER SKY THEATER**  
400 Cocktail Reception  
200 Seated Dinner  
195 Theater Seating



**CLARK FAMILY WELCOME GALLERY**  
150 Cocktail Reception  
300 Cocktail Reception + Rainbow Lobby



**RAINBOW LOBBY**  
150 Cocktail Reception  
300 Cocktail Reception + Welcome Gallery



**GREEN ROOM**  
The green room provides a private and convenient space to get ready for your event



**PETROVICH FAMILY OBSERVING GALLERY AND LAB**  
20 Cocktail Reception  
15 Seated Luncheon/Dinner



Photo by SB Childs Photography





Photo by  
Richard Remiard  
Event Design

# Interactive Science Experiences



Delight your guests with hands-on, minds-on science activities facilitated by museum educators. Guests are encouraged to participate in various activities that cast them in the role of scientist, engineer, astronaut, or creative problem solver. Each activity can accommodate approximately four to five people at a time.

**\$500 PER ACTIVITY (DURATION: 2 HOURS)**

**Booking Details:** *Must be booked two months prior to event. Within two months will be based on staff availability. Maximum of 3 per event.*

## HANDS-ON EXPERIMENTS

**UNDER PRESSURE** *Did you know? Without the protection of a space suit, an astronaut's saliva would boil in the vacuum of space.*

Space is a vacuum. Without a protective blanket of air, in space, everyday objects would begin to act strangely. An Adler Facilitator will assist you in designing and conducting a variety of experiments that will test what happens to various objects when put into a vacuum chamber.

**LIGHTS IN THE SKY** *Did you know? Solar Storms have caused blackouts in Quebec and have forced the Toronto Stock Market to close.*

The Northern Lights are beautiful curtains of color brilliantly waving in the arctic sky. They result from massive storms that occur on the dynamic Sun, sending out massive amounts of charged particles across the Solar System. In this activity, an Adler Facilitator will collaborate with you to create your own experiments, to discover the origin of these breathtaking ribbons in the sky, and explore the science of how their colors are used by astronomers to discover mysteries all around the Universe.

## HANDS-ON DEMONSTRATIONS

**DRY ICE-CAPADES** *Did you know? Comets sublime as they approach the Sun, creating tails that are more than 93,000,000 miles long.*

Dry ice does not melt. Through a series of hands-on demonstrations, you will have the opportunity to play with changes in states of matter like trying to capture dry ice fog and make your own explosions.

**LIQUID NITROGEN FUN** *Did you know? Many of our Solar System's distant moons have volcanoes that spew ice instead of fire!*

Liquid nitrogen boils at  $-321^{\circ}\text{F}$ . At this temperature, everyday objects act extremely weird. Through a series of demonstrations, you can explore how random objects like balloons, bananas and gummy bears act at the extreme temperatures found at the far outreaches of our Solar System. Watch a recreation of Neptune's Cryo-gyser!

**SCIENCE SOMMELIER** Put your minds to the test in a series of short science "magic tricks" that will challenge your scientific thinking. And don't worry—unlike magicians—our Science Sommeliers share the science behind their "tricks" so you can amaze and delight your friends! This activity can also be done table-side during dinner to enhance the dining experience.



We look forward  
to celebrating  
with you!

**FOR MORE INFORMATION, PLEASE CONTACT**

Taryn Mason  
Manager of Special Events & Initiatives  
[tmason@adlerplanetarium.org](mailto:tmason@adlerplanetarium.org)  
312.542.2425

**ADLER**  
PLANETARIUM