

The Tour Guide

Welcome to Camp!

Summer Worlds Tour opens the doors of Adler Planetarium, The Field Museum, and Shedd Aquarium for campers to explore the depths of sky, land and water through exhibit exploration, hands-on activities, games, and art projects.

Parent Tool Kit

We have a week full of fun and exciting adventures planned for your camper. After a half-day “explorer training” on Monday morning, campers will spend a day and a half at each institution. Take a look at the schedule below to determine where your child will be on any given day.

KEY CONTACT

Please call (312) 692-3159 in the event of a sick camper, emergency, or late arrival/pick-up.

SPECIAL CONSIDERATIONS

ANY Allergies, Medications or Other Special Considerations

Please let us know if there is any information that we should be aware of while your camper is in our care.

WHAT'S INSIDE THE TOUR GUIDE?

- Parent Tool Kit
- Car Ride Home Questions
- Meet the Staff
- Drop-off/Pick-up Checklist
- Parking Information
- Other Family Programs

What's Inside Your Backpack?

Help your camper pack their backpack with these items:

- **Water Bottle and Sunscreen**
- **Peanut-Free Lunch** – The Summer Worlds Tour program is a peanut free program. For the safety of all participants, please refrain from packing lunches that contain peanut products.
- **Extra Snacks and Drinks** – Please pack a little extra in your camper’s lunch for healthy snacking.

Help your camper dress appropriately for camp each day:

- **Mandatory Summer Worlds Tour T-shirt** – All campers will receive one camp T-shirt (inquire with your counselor if you wish to purchase more). Please be aware if a camper comes without the mandatory T-shirt, an additional T-shirt must be purchased.
- **Comfortable Play Clothes** – Summer Worlds Tour is all about exploring and sometimes the work of an explorer gets a little messy. For our youngest explorers, a set of spare clothes is also a good idea.
- **Closed-Toe Shoes** – Open-toed shoes and Crocs are not permitted at camp.
- **Lightweight Jacket or Sweatshirt or Rain Gear (if necessary)**
Some Museum spaces may be a bit chilly.

CAMP SCHEDULE

Groups		Monday	Tuesday	Wednesday	Thursday	Friday
A,C,E	AM	Orientation	Field	Shedd	Shedd	Adler
	PM	Field	Field	Shedd	Adler	Adler
B,D,F	AM	Orientation	Shedd	Adler	Adler	Field
	PM	Shedd	Shedd	Adler	Field	Field

Car Ride Home Questions

Explore our solar system as an astronomer at the Adler Planetarium

All Groups

1. What are the different parts of your rocket? How do they help your rocket fly?
2. What are comets made of? Why do comets have a tail?
3. What do we need to live on Planet Earth? What do plants need to live on Planet Earth?
4. How would we need to “adapt” to live on Mars? What do you think a creature that lives on Mars might be like?

Discover the marvels of natural engineering through at The Field Museum

Groups A & B

1. What parts of your body can you stretch?
2. Animals that fly or swim use what parts of their body to move?
3. Can you name an invention inspired by flying animals?

Groups C & D

1. What adaptations do some animals have that help keep them warm?
2. What parts of your body release the most heat? Why do you think they release more heat than other parts?
3. What does the skull shape of a hard biter look like? What about a fast biter?

Groups E & F

1. Describe one animal you learned about today and what adaptations it has.
2. How are different animal bones designed to withstand different forces?
3. Why are animals that live in colder regions so much larger than animals that live in warmer regions?

Make discoveries about animals and environments at Shedd Aquarium

Groups A & B

1. Name one fish that is found in the Great Lakes, what did it look like?
2. Why do you have a plant with you today? What is one thing you learned about Shedd Aquarium’s gardens today?
3. What is a habitat? Describe one habitat you learned about today.

Groups C & D

1. Name three animals found in the Great Lakes region. Name one fact for each animal?
2. What is plankton? Where does it fit in the food chain?
3. Why do you have a plant with you today? What did you learn about the gardens at Shedd?

Groups E & F

1. Describe three animals found in the Great Lakes region? Describe how these animals are connected to us and how we affect their ecosystem.
2. What is plankton? Describe the plankton that you examined under the microscope.
3. Why do you have a plant with you today? Why are the Shedd Aquarium gardens important?

Meet the Staff

Senior Staff



Peggy Piper
Adler Coordinator



Mireya Becker
Field Coordinator



Jackie Formoso
Shedd Coordinator



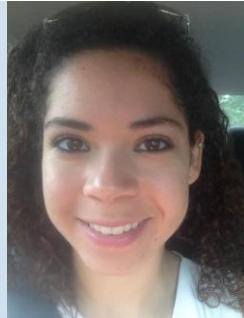
Lauren Collins
Integration Specialist

2014 Counselors

Group A

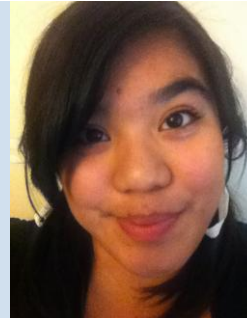


Sarah Lammie

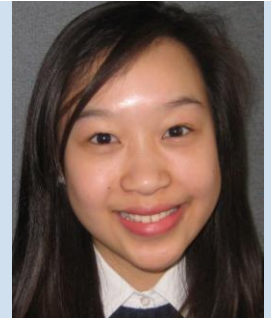


Ashley Hall

Group B



Angela Escobar



Jennifer Jun

Group C



Amanda Kreigl



Soffia Kuehner-Gray

Group D



Estefany Romero



Tiffany Guel

Group E



Katie Bilby

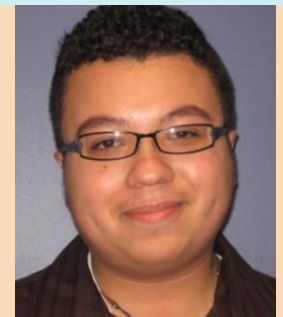


Sara Sewyrn

Group F



Ann Dernbach



Danny Pena

Drop-Off Checklist: 8:30-9:00am

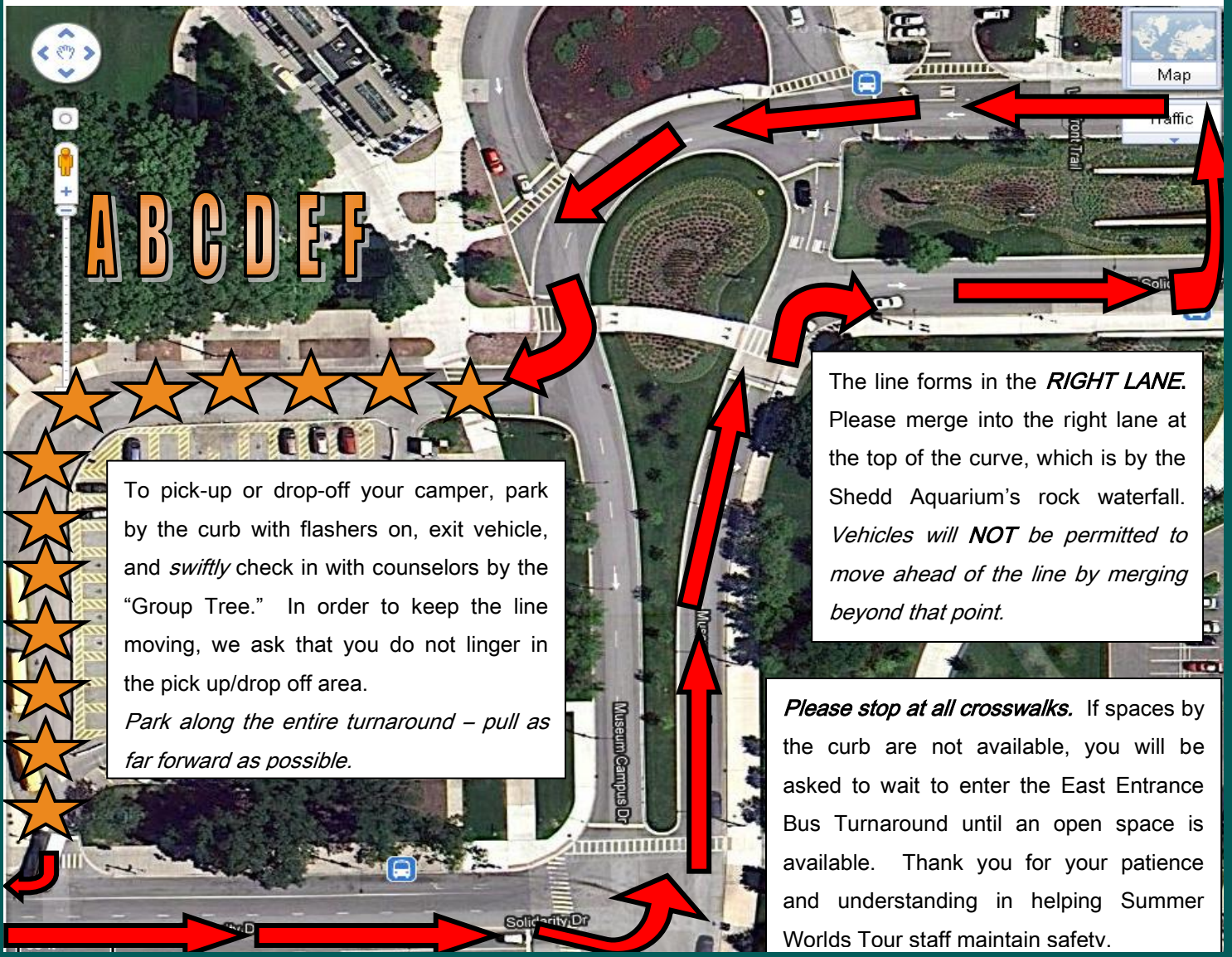
- ❑ Place parking placard (received the first day of camp) on dashboard when entering the queue. Park along curb and turn on hazard lights before exiting the car. This will give you 10 minutes of standing time.
- ❑ If you arrive after 9:00am, please drop off your very excited camper at their scheduled A.M. Museum.
- ❑ If someone other than you is picking up your camper, please let counselors know at drop-off time.

Note: In the event of inclement weather, you may be directed to drop-off/pick-up your camper at their am/pm museum. A message will be at (312) 322-0329 indicating if alternative drop-off/pick-up procedures are in use.

Pick-Up Checklist: 3:00-3:30pm

- ❑ Please be aware that if you arrive later than 3:30pm, you will be charged a late pick-up fee of \$5.00 for every five minutes.
- ❑ Place parking placard (received the first day of camp) on dashboard when entering the queue. Park along curb and turn on hazard lights before exiting the car. This will give you 10 minutes of standing time.
- ❑ Sign out your camper using your initial on the check-out sheet.
- ❑ Use the Car Ride Home Questions in this Tour Guide to find out what your camper did today.

Drop-off and Pick-up will take place at The Field Museum Bus Drop-off on the east side of the building in between the parking lot at the East Entrance.



Family Programs You Might Enjoy

The Adler Planetarium

www.adlerplanetarium.org

Destination Solar System

Take a trip to the future with Destination Solar System, a live show that takes explorers on a tour of the Solar System! In Destination Solar System, it's the year 2096, and space tourism is available to everyone. From sizzling solar flares on the Sun to liquid methane lakes on Saturn's moon, Titan, tour the hottest spots and coldest, stormiest and most spectacular sights in the Solar System. Tours launch daily from the Adler Planetarium's Grainger Sky Theater. <http://destinationsolarsystem.adlerplanetarium.org/>

Astro-Overnights

Don't miss your chance to spend a night at the museum! During Adler Astro-Overnights, children, ages 6 through 10 (and their accompanying adult), dream of landing on the Moon, exploring the surface of Mars, and shooting past asteroids. Adler Educators lead your child through a Solar System adventure with hands-on activities, a special Grainger Sky Theater show and award-winning exhibitions. Light snacks, continental breakfast and two sky shows are included. Look for 2014 -2015 dates coming soon at <http://www.adlerplanetarium.org/astro-overnights>

The Field Museum

www.fieldmuseum.org

The Machine Inside: Biomechanics

March 12th through January 4th

Imagine if your jaws could crush over 8,000 pounds in one bite, your ears could act as air conditioners, and your legs could leap the length of a football field in a single bound. From the inside out, every living thing, including humans, is a machine built to survive, move, and discover. Feel for yourself how hard a giraffe's heart works to pump blood up to its head. Try to "fly" and study the many different ways creatures jump, gallop, slither, and swim. And see technological breakthroughs – like Velcro, wind turbines, and chainsaws – that were inspired by nature's ingenuity.

Dozin' with the Dinos Overnight Events

Winter/Spring 2015

Imagine roaming The Field Museum at night! Dozin' with the Dinos is a unique opportunity for children ages 6-12 to spend the night at The Field Museum. Enjoy workshop activities, flashlight tours, and bedtime stories told in the shadow of SUE the Tyrannosaurus rex. 2015 dates announced July 2014. For tickets and more information please visit www.fieldmuseum.org/overnights

Shedd Aquarium

www.sheddaquarium.org/education

Stingray Touch Experience

Open now through October!

Feel the wonder as these graceful fish glide effortlessly through the water and under your fingertips. Stroll the outdoor experience and learn about these gentle, graceful animals, and how your everyday actions can protect them in the wild.

Spooky Seas Family Overnight

Come to Spooky Seas, Shedd's annual family Halloween celebration. Children must be at least 5 years old to spend the night. Families who wish to come to the party but not stay overnight may do so by registering for the evening-only option. Enjoy all of the festivities without the slumbering! Visit Shedd's website for more information, including date and time for 2014!

Spring Break Camp

Your kids won't need to travel far to experience a memorable Spring Break. Shedd Aquarium offers a week long Spring Break Camp where campers get up close and personal with Shedd Aquarium animals, visit behind the scenes areas rarely seen by guests and travel to local natural areas to explore animals and their environments. Check the Shedd Aquarium website soon for information on upcoming program dates and times.