





Credit: @tissier.antoine

THE ADLER PLANETARIUM: YESTERDAY, TODAY, TOMORROW



2020 reminded us that we can never be too sure what the future holds. But with support from friends like you, we've taken this year as an opportunity to transform, building stronger foundations in digital engagement, and making space science accessible to audiences around the world.



As we complete another path around our Sun, we are thrilled to celebrate our 90-year history, confident in the journey ahead, and proud to look back on the achievements of 2020.





Scene from a *Skywatch Weekly* episode



PUBLIC OBSERVING

Although our museum was closed for much of 2020, the sky remained open to all! In fact, this year was full of unexpected astronomical events, from a surprisingly bright comet to a mysteriously dimming supergiant star. At every step, the Adler brought communities together, thanks to engaging digital programs like these.



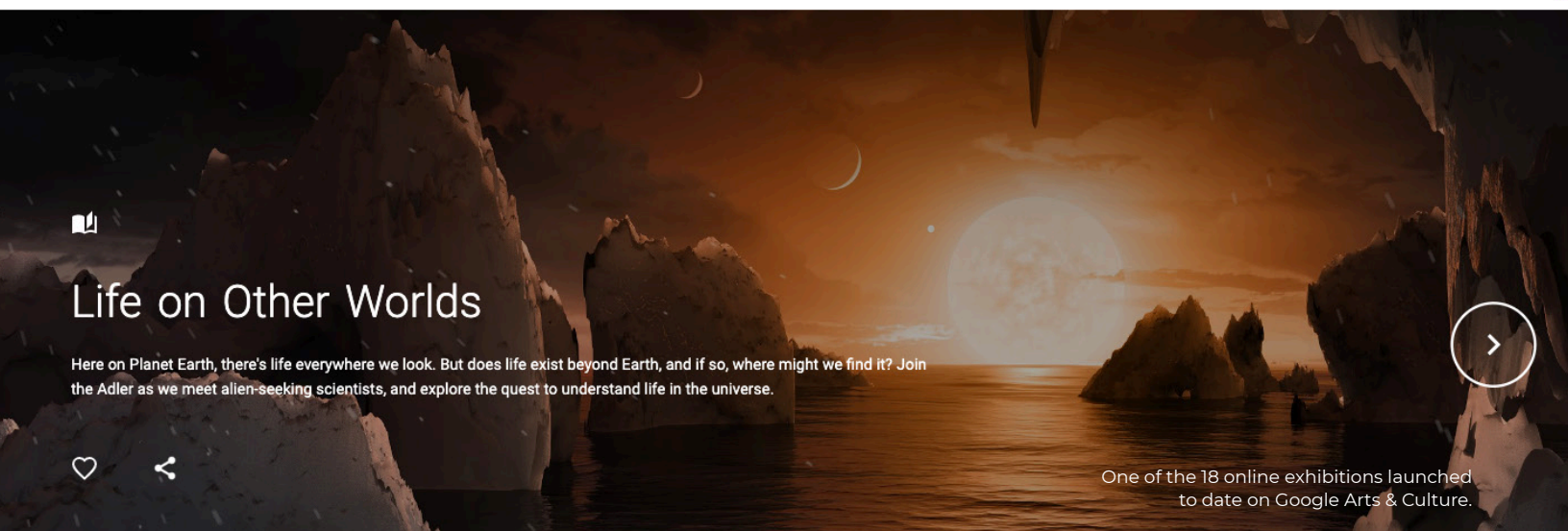
SKY OBSERVERS HANGOUT

While *Scopes in the City* in-person events are postponed, the Adler's Public Observing team is still connecting with sky-watchers everywhere. In this new series, participants interact live with Adler astronomers, trying out new skills like nighttime sky photography, retooling everyday objects to safely observe the Sun, the Moon, and other celestial objects, and learning the best ways to experience upcoming cosmic events.

SKYWATCH WEEKLY

There's more to see in the sky than you might imagine! Born out of the popularity of the Adler's *Skywatch Live* dome show, *Skywatch Weekly* encourages viewers to get to know the sky and discover the way it changes from one week to the next. Wherever they live, audiences form connections with the universe and with everyone who is also looking up.





ONLINE EXHIBITIONS & EXPERIENCES

Before internet access was available in homes and pockets around the world, the physical museum was one of the few places people could go to explore the universe without leaving the ground. Now, thanks to technology, our potential reach is limitless! With captivating experiences like the ones below, the Adler is connecting digitally with more people than ever before, as we work to promote accessibility and accomplishment in STEAM (science, technology, engineering, art, and math) and make the world a more equitable place for everyone.



ADLER ZOONIVERSE

The Adler *Zooniverse* is the world's largest platform for citizen science, connecting millions of volunteers to research questions across dozens of fields, from astronomy and cosmology to medicine, history, biology, and more. In a year of unprecedented challenges, we helped scientists connect with hundreds of thousands of people. Together, they shattered annual records, launching 65 projects, submitting 84 million classifications, and publishing 35 papers.

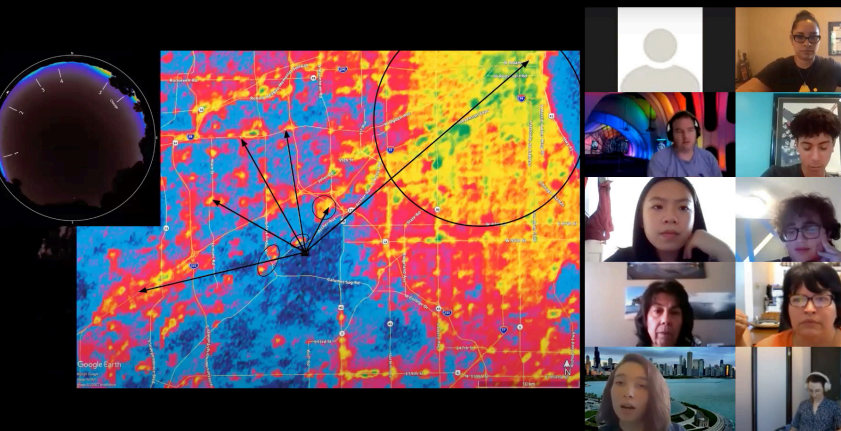
GOOGLE ARTS & CULTURE

Now premiering monthly, Adler exhibitions on the online Google Arts and Culture platform invite tens of thousands of visitors to enjoy the stories that make the planetarium a place of wonder. Highlighting historic objects from the Adler's collections, online exhibitions like the recently premiered "Raíces Bajo Las Estrellas: Rooted Under the Stars," showcase the important work of women and communities of color and connect audiences to the Adler, from the comfort of their homes.

ADLER ASTRONOMY LIVE

In this new interactive series, launched in July 2020, space enthusiasts interact with astronomers and science historians while enjoying eye-popping space visualizations, cutting-edge research, space science news, and the human stories behind scientific discoveries.





TEEN PROGRAMS

The Adler's commitment to fostering the next generation of community leaders is stronger than ever. In 2020, adapting fluidly to digital platforms, Adler teens honed crucial skills in STEAM and laid the groundwork for future missions of discovery.



FAR HORIZONS

Representing Chicago's young people in all their diversity, determination, and creative potential, the Adler's *Far Horizons* mission puts cutting-edge research in the hands of student-scientists. This year, participants created models of smart lighting systems, presented findings and solutions to local leaders and the public, and learned valuable lessons about leadership and perseverance.

YOLO & LIGHT POLLUTION RESEARCH

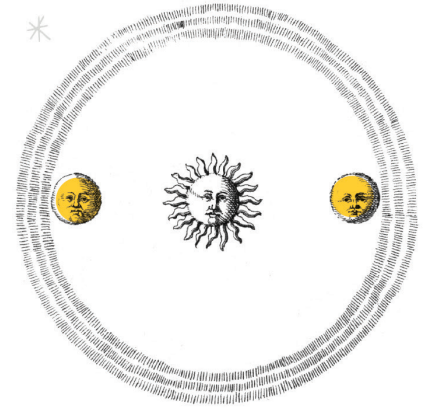
This year, COVID-19 served as a reminder that difficult problems call for cooperation and innovation, a lesson Adler teens know well from their work on light pollution. From *Far Horizons* to the *Youth Organization for Lights Out* (YOLO), Adler teens pool their efforts to research light pollution challenges and advocate for community solutions. This year, teens presented research to the Forest Preserves District of Cook County, advocating for the establishment of Chicago's first Urban Night Sky Place: a major step forward for night sky accessibility.

AQUARIUS PROJECT

In February 2017, a 600-pound meteorite streaked through the Midwest sky and landed in Lake Michigan, 10 miles off the coast of Wisconsin. Hoping to retrieve fragments of this meteorite from the bottom of the lake, Adler teens launched the *Aquarius Project*. After thousands of research hours and hundreds of miles (over bumpy roads and rolling waves), their tenacity has finally paid off! Announcing the discovery of two probable meteorites at the September 10 episode of *Adler Astronomy Live*, we were thrilled to celebrate the success of this expedition.



IT'S COSMIC!



FY19 FINANCIALS

(JULY 1, 2018 - JUNE 30, 2019)

REVENUE & SUPPORT		EXPENSES	
Contributions, Memberships & Fundraising Events	\$8,331,000	Education & Professional Programs	\$15,395,000
Admissions	\$5,964,000	Collections Care & Stewardship	\$505,000
Chicago Park District	\$1,663,000	Development & Membership	\$2,157,000
Other Government Grants	\$817,000	Administration	\$2,030,000
Other Earned Revenue	\$3,060,000	TOTAL:	\$20,087,000
TOTAL	\$19,835,000		





ADLER PLANETARIUM BOARD OF TRUSTEES

OFFICERS

Linda P. Jojo
CHAIR

Kecia Steelman
VICE CHAIR

Daniel T. Mueller
SECRETARY

Jonathan H. Herbst
TREASURER

Michelle B. Larson, PhD
PRESIDENT & CEO

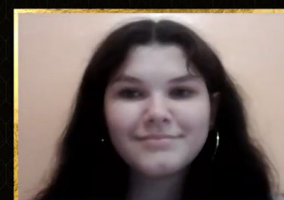
TRUSTEES

Cynthia L. Ballew
Russell F. Bartmes
Caroline Becker Joss
Raj Bhatia
Carolyn Doane Bowman
Liam Caffrey
John E. Carlstrom, PhD
Linda I. Celesia
Donald C. Clark, Jr.
Frank M. Clark

Earle M. Combs III
Bryan C. Cressey
David A. Crown, PhD
Joseph Dominguez
J. Douglas Donenfeld
Daniel R. Eder
John W. Estey
Lilly Farahnakian
Michel J. Feldman
Tacy Flint
David W. Fox
Wendy L. Freedman, PhD
Nancy Emrich Freeman
Ryan Garino
Nancy S. Gerrie
Howard S. Goss
William J. Gruber
Raj P. Gupta, PE
Amelia A. Huntington
Seth E. Jacobson
Michael P. Kelly
Clyde Kofman
Peter J. Langas
Lisa H. Lewis

Steven S. Louis, MD
Captain James A. Lovell, Jr.
Michael J. McMurray
Maryann N. McNally
David Mintzer, PhD
James C. Murray
Ashley Hemphill Netzkzy
James J. O'Connor, Jr.
James J. O'Connor, Sr.
Pradip K. Patiath
Dushan Petrovich
Irene Siragusa Phelps
Ian C. Radomski
Sean B. Reynolds
Aaron C. Rudberg
Brad Serlin
Gurpreet Singh
Harold B. Smith
Paul D. Steinberg
Scott C. Swanson
Anthony L. Toulouse
Tina Tromiczak
Peter O. Vandervoort, PhD
Edward J. Williams





DR. K. RENEE HORTON
NASA ENGINEER

**CELESTIAL
BALL**

ADLER PLANETARIUM WOMEN'S BOARD

Caroline Becker Joss
PRESIDENT

Linda I. Celesia
FOUNDER

Kerri Schoonyoung
**2020 CELESTIAL BALL
CO-CHAIR**

Claire York
**2020 CELESTIAL BALL
CO-CHAIR**

Jacqueline G. Hawwa
2020 WISS CHAIR

Melissa Leet
2020 WISS VICE-CHAIR

Cynthia L. Ballew
Sonia Barrett-Esler
Erika Lautman Bartelstein
Donna Beering
Lisa H. Bertagna
Sherry Schmitter Block
Kate Boege
Jennifer Burnette
Evangelina Chandel
Rebecca Childers Caleel
Kate Cicchelli
Vera Clark
Mel Cooney Higgins
Anjali DiCarlo
Alison Donnelly
Susan V. Downing
Lilly Farahnakian
Tacy F. Flint
Grith Funk
Linda Ieleja Gerstman
Laura A. Glick
Christine Hjorth
Dr. Carsi Hughes

Kelly Kaiser
Mary Ann Karris
Susan Kirshner
Christina Kline
Giovanna Krozel
Renu Kulkarni
Jeannie Lewis
Lisa H. Lewis
Susan K. Lovell
Carlette McMullan
Laura Myntti
Pamela Paziotopoulos
Pamela Pohl
Meg Prendergast
Elisa Primavera-Bailey
Janet Rauschenberger
Meg Sauer
Mihra Seta
Laila Shetty Geht
Orli D. Staley
Nancy A. Temple
Michelle Vanderlaan
Almira Yllana





THANK YOU

Wherever we look in the fabric of spacetime, it's the connections between people and communities that stitch everything together. Every day at the Adler Planetarium, we invite people like you to add their discoveries, their ideas, and their dreams for the future to the unfurling story of our universe.

We hope you will join us in 2021 as our community works together to solve challenges, inspire minds, and answer the biggest questions here on Earth and across the cosmos.