

## What is 2014 MU<sub>69</sub> (Ultima Thule)?

Ultima Thule--or 2014 MU<sub>69</sub>--is a small TNO (Trans-Neptunian Object) located beyond the orbit of Pluto in the outermost reaches of the Solar System. The New Horizons probe visited this distant world for the first time on January 1, 2019.

## The Hyperspace Trail

6:00–9:30 / Cafe Galileo's [Check-In] / Building-Wide

The invasion has begun! Gather your crew and navigate a dangerous Solar System by solving challenges, making decisions, and collecting resources to make it to the new human outpost on 2014 MU<sub>69</sub>. It's like The Oregon Trail meets Settlers of Catan—in space (just be careful of Lunar Dysentery). Register your crew & ship at Mission Control in Cafe Galileo's!

\*See the correlating icons below to locate each challenge on the map.



### MOON: Lunar Scouting Expedition

6:00–9:45 / Cafe Galileo's, Level 4

Resources Earned: 3 Fuel, 3 Food, 0 Water, 2 Air



### MARS: Marineris Supply Drop

6:00–9:45 / Community Design Lab, Level 2

Resources Earned: 2 Fuel, 0 Food, 2 Water, 3 Air



### ASTEROID BELT: Ceres Grand Prix

6:00–9:45 / Planet Explorers, Level 4

Resources Earned: 4 Fuel, 2 Food, 1 Water, 3 Air



### JUPITER: Europa Fishing Trip

6:00–9:45 / Astronomy in Culture, Level 2

Resources Earned: 0 Fuel, 3 Food, 4 Water, 2 Air



### PLUTO: Ice to See You

6:00–9:45 / Planet Explorers, Level 4

Resources Earned: 2 Fuel, 1 Food, 2 Water, 0 Air



### Ultima!

6:00–10:00 / Cafe Galileo's, Level 4

You made it! Return to Cafe Galileo's to record your final score and enter for a chance at wonderful prizes!

Resources Earned: 1 Fuel, 3 Food, 3 Water, 2 Air



### Trading Posts – 6:00-9:30

Phobos – What is a Planet?, Level 2

Titan – Level 4 Hallway

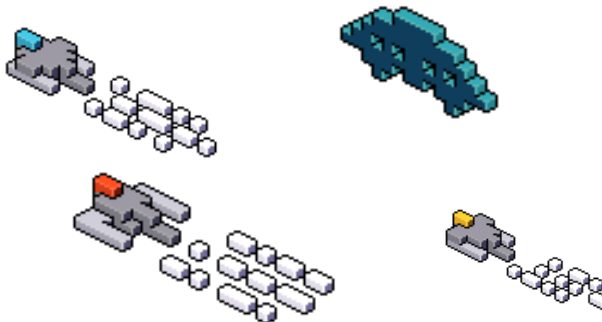
Did space pirates steal your fuel? Visit one of the Trading Posts to exchange resources or try your luck at spacey trivia to earn additional resources! Use your chips to gain access to the Trading Post.

## OTHER HAPPENINGS

### Invasion: 1938 – with Terrible Spaceship

8:00 & 9:00 / Samuel C. Johnson Family Star Theater

Adler After Dark is proud to host Terrible Spaceship, Chicago's premier ambient synthetic horror pop band, who rediscovers media from the past and resuscitates it into a retro-futuristic music and video multimedia experience. Don't miss their homage to Orson Welles' classic radio drama, *War of the Worlds*, set to an original score!



## SKY SHOWS & PRESENTATIONS\*

\*All theater shows/lectures/presentations are included in your admission ticket, and are between 15-30 minutes long. Plan to arrive at the theater 15-30 minutes before your chosen show time(s); seats are first-come, first-served.

### Show: *Imagine the Moon* – NEW

6:30, 7:15, 8:00, 8:45, 9:30 / Grainger Sky Theater

To some, the Moon may seem cold and remote. To others, its predictability brings comfort. Our celestial partner has been a source of wonder for all of human history, so come explore our fascination with the Moon up close at this brand new sky show!

### Show: *Skywatch Live*

7:15, 8:45, 9:30 / Definiti Space Theater

Explore the spectacular sights of tonight's sky in this live show.

### Show: *Planet Nine*

6:30, 8:00 / Definiti Space Theater

Follow Mike Brown on a journey to the outer Solar System and the hunt for Planet Nine.

### Talk: *The Alien Invasion is...US!* with Lucianne Walkowicz

7:00 / Samuel C. Johnson Family Star Theater

In movies and TV, we often see aliens invading Earth from some distant planet or galaxy. But what if the real space invaders are--gasp--humans? Come hear astronomer Lucianne Walkowicz talk about why humans might be the real aliens after all.

ENTERTAINMENT: DJ Chess Hubbard

DINNER FOR PURCHASE:

Café Galileo's – Level 4: 6:00–9:00

BARS: Level 4 & Level 2 – 6:00–9:45

SPECIALTY COCKTAIL: *The Ultima(te)*



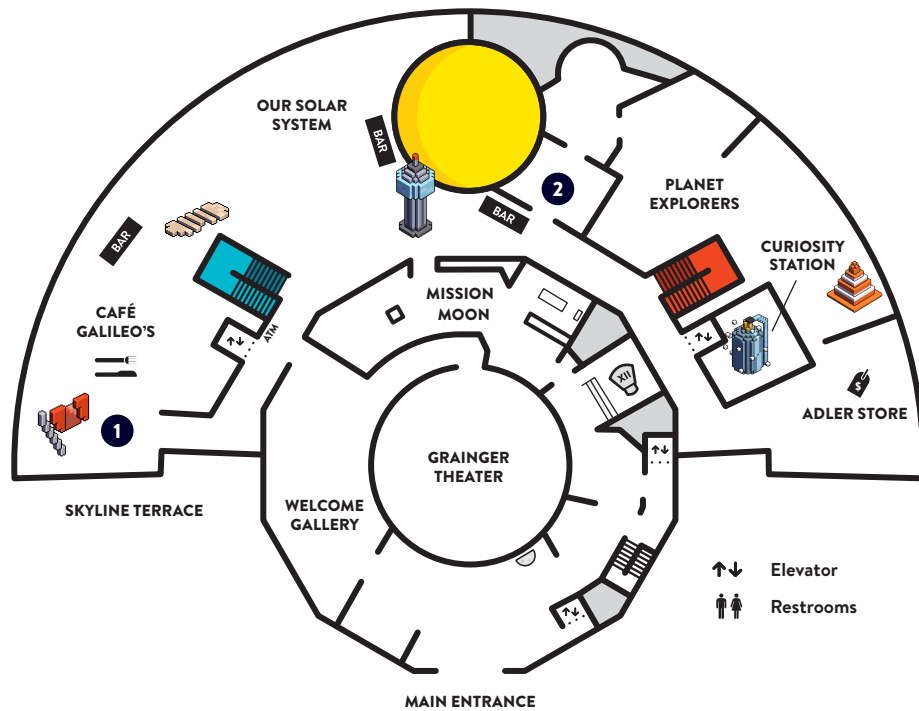
THURSDAY, JANUARY 17 | 6:00 pm - 10:00 pm

JOIN THE CONVERSATION @adlerplanet

#ADLERAFTERDARK fb.com/adlerplanetarium



## LEVEL 4



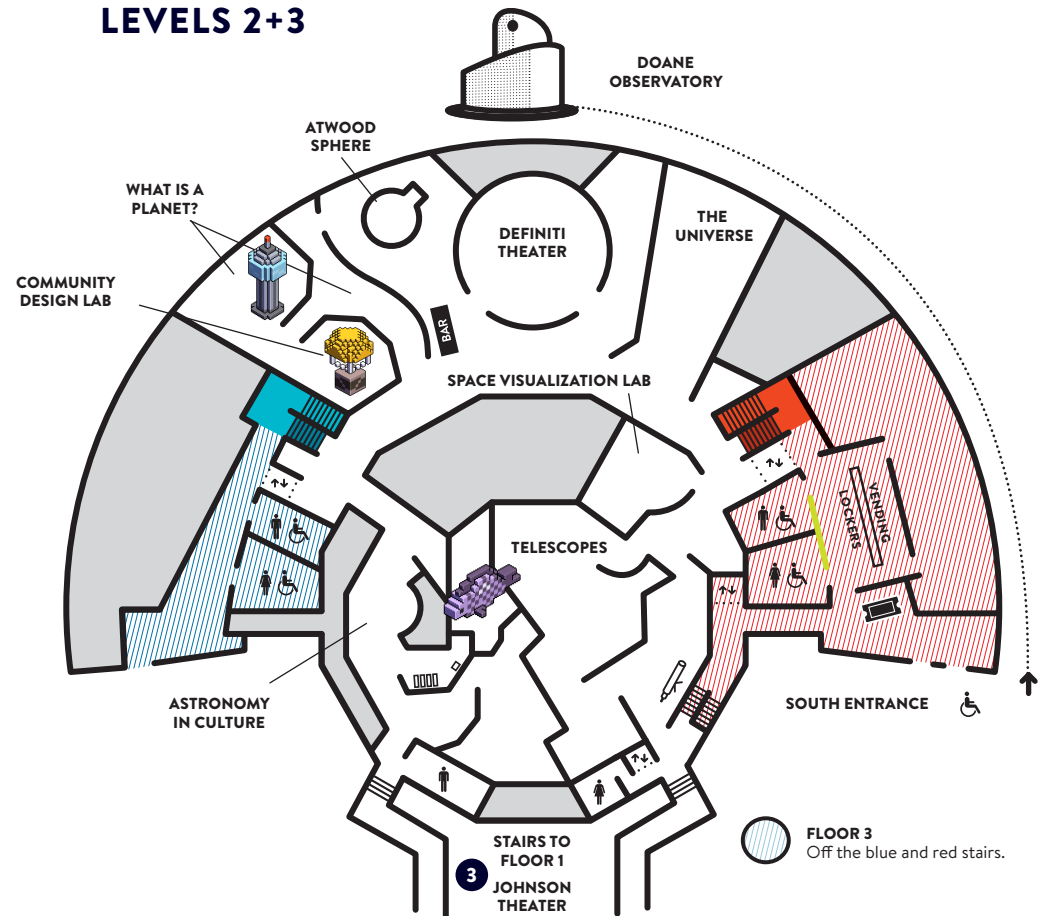
### ADLER EXCLUSIVE

- 1 The Ultima Trail

### OTHER HAPPENINGS

- 2 Arcade Planet – with Galloping Ghost
- 3 *Invasion: 1938* – with Terrible Spaceship

## LEVELS 2+3



### LEVEL 2

ASTRONOMY IN CULTURE (MEN'S)  
TELESCOPES (WOMEN'S)

### LEVEL 3N (NORTH)

RESTROOMS

### LEVEL 3S (SOUTH)

COAT & BAG CHECK  
RESTROOMS  
VENDING

### LEVEL 4

ATM  
ADLER STORE – 6:00-10:00