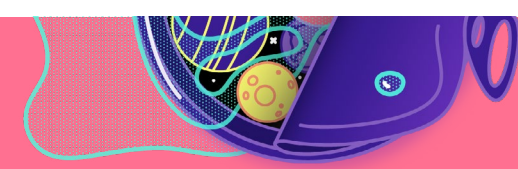


# TASTE OF SPACE

THURSDAY, AUGUST 15 | 6:30 pm - 10:30

JOIN THE CONVERSATION @adlerplanet

#ADLERAFTERDARK fb.com/adlerplanetarium



## ADLER EXCLUSIVE

### Food Trucks\*

6:30–8:00

Enjoy a bite from one of the food trucks parked right out front on the Sundial Plaza!

*\*Note that alcoholic beverages cannot leave the museum*

### Beer Samples – with Empirical Brewery

6:30–10:15\* / Level 4, Our Solar System

Our friends at Empirical have created a special brew inspired by summer AND our closest planetary neighbor–Venus. Come try a sample of Hot & Hazy, a super sessionable IPA, and another delicious brew from Empirical Brewery.

*\*While supplies last. Quantities limited. Attached tickets can be redeemed for samples ONLY*

### Taste of Space Scavenger Hunt

6:30–10:00 / Building-Wide

Food and space are more closely related than you may think. Find these connections all over the museum! Pick up your guide in the Planet Explorers exhibit on Level 4—prizes will be awarded!

### Smelly Space

6:30–10:00 / Level 4 Hallway

Did you know that places in space have distinct smells? Use your nose to identify these scents and try to identify where they come from!

### Super Cool Science – Liquid Nitrogen Demo

6:30–10:00\* / Level 4, Planet Explorers

It doesn't get much colder than liquid nitrogen. Release all your pent up frustration by freezing and smashing flowers, bananas, and more!

*\*This program will reset every 15 minutes*

## SKY SHOWS & PRESENTATIONS\*

*\*All theater shows/lectures/presentations are included in your admission ticket, and are between 15-30 minutes long. Plan to arrive at the theater 15-30 minutes before your chosen show time(s); seats are first-come, first-served.*

### Show: *Imagine the Moon* – NEW

7:00, 7:45, 8:30, 9:15, 10:00 / Level 4, Grainger Sky Theater

Our celestial partner has been a source of wonder for all of human history, so come explore our fascination with the Moon up close at this brand new sky show!

### Show: *Planet Nine*

7:45 & 9:15 / Level 2, Definiti Space Theater

Follow Mike Brown on a journey to the outer Solar System and the hunt for Planet Nine.

### Show: *Skywatch Live*

7:00, 8:30, 10:00 / Level 2, Definiti Space Theater

Explore the spectacular sights of tonight's sky in this live show.

### Talk: *Team Trivia* – with Astronomy on Tap

8:30 / Level 1, Samuel C. Johnson Family Star Theater

Join the folks from Astronomy on Tap for a no-holds-barred team trivia game with questions ranging from science to sci-fi & beyond! Prizes for the top teams will be awarded!

### Talk: *Eat Like a Martian* – with Sian Proctor, PhD

7:30 & 9:30\* / Level 1, Samuel C. Johnson Family Star Theater

Join Sian Proctor, a geoscience professor, STEM outreach educator, and “analogue astronaut,” in a conversation on food strategies for long-duration spaceflight and how “eating like a Martian” can help us to create sustainable food economies here on Earth. Dr. Proctor's new book, *Meals for Mars*, is available tonight-only in the Adler Store on Level 4!

## OTHER HAPPENINGS

### Plant Chicago & Closed Loop Farms

6:30–9:30 / Level 4, Curiosity Station

Sustainable food production, energy conservation and material reuse will be crucial if we ever live off-world. Learn more about sustainability with an aquaponic system from Plant Chicago, and check out a hydroponic garden from Closed Loop Farms. They will have hydroponically-grown microgreens for you to taste!

### (G)astro Landers!

6:30–10:00 / Level 2, Community Design Lab

In this engineering challenge, design a vehicle out of LEGO pieces to deliver much-needed supplies to a Martian base along a zipline! Side note: the supplies are obviously candy.

### Astronomy on Tap – Northwestern University

6:30–9:30 / Level 2, outside Telescopes Exhibit

Have a burning question about space? The folks from Northwestern's Astronomy Department are here to help! Pick up some Astronomy on Tap swag, and be sure to check out their Team Trivia program at 8:30 pm in the Samuel C. Johnson Family Star Theater!

### Telescope Observing

6:30–10:30 / Outside Level 3 South

Weather permitting

### Astronomy Conversations – Space Visualization Lab

6:30–10:00 / Level 2, near Telescopes Exhibit

Chat with astronomers and physicists about the coolest stories & hottest news in your universe

### Atwood Sphere

6:30–10:00 / Level 2

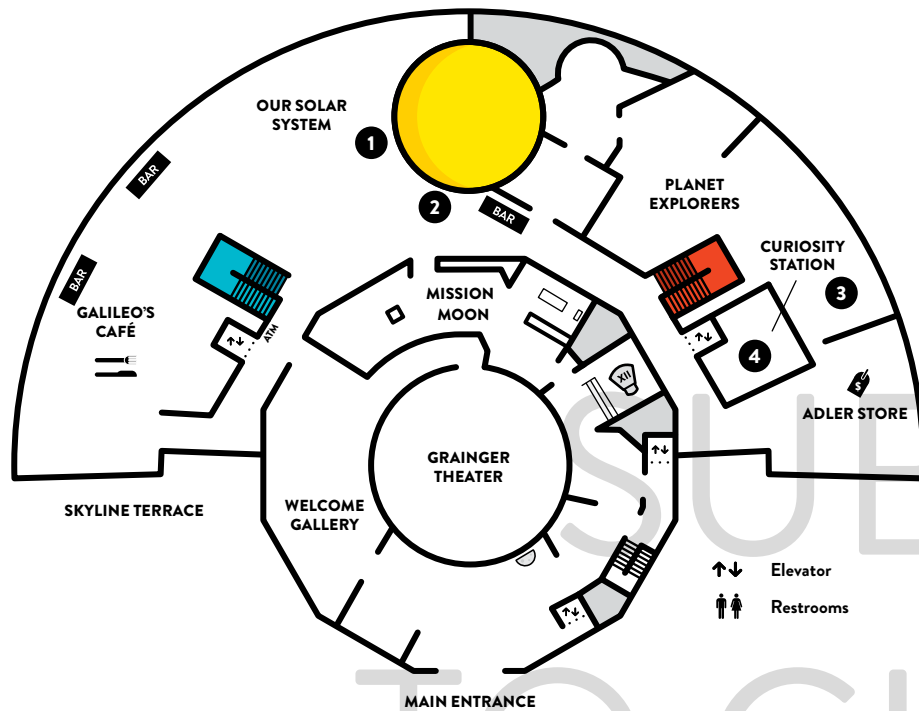
Navigate the night sky in a 106-year-old mechanical planetarium.

**ENTERTAINMENT:** DJ Catieo  
**BARS:** Level 4 & Level 2 – 6:30–10:15  
**SPECIALTY COCKTAIL:** Tang 2.0  
**DINNER FOR PURCHASE**  
Galileo's Café – Level 4: 6:30–10:30

DON'T MISS A SPECIAL, ONE-NIGHT-ONLY  
MENU IN GALILEO'S CAFE INSPIRED  
BY ALL THINGS COSMIC!



## LEVEL 4



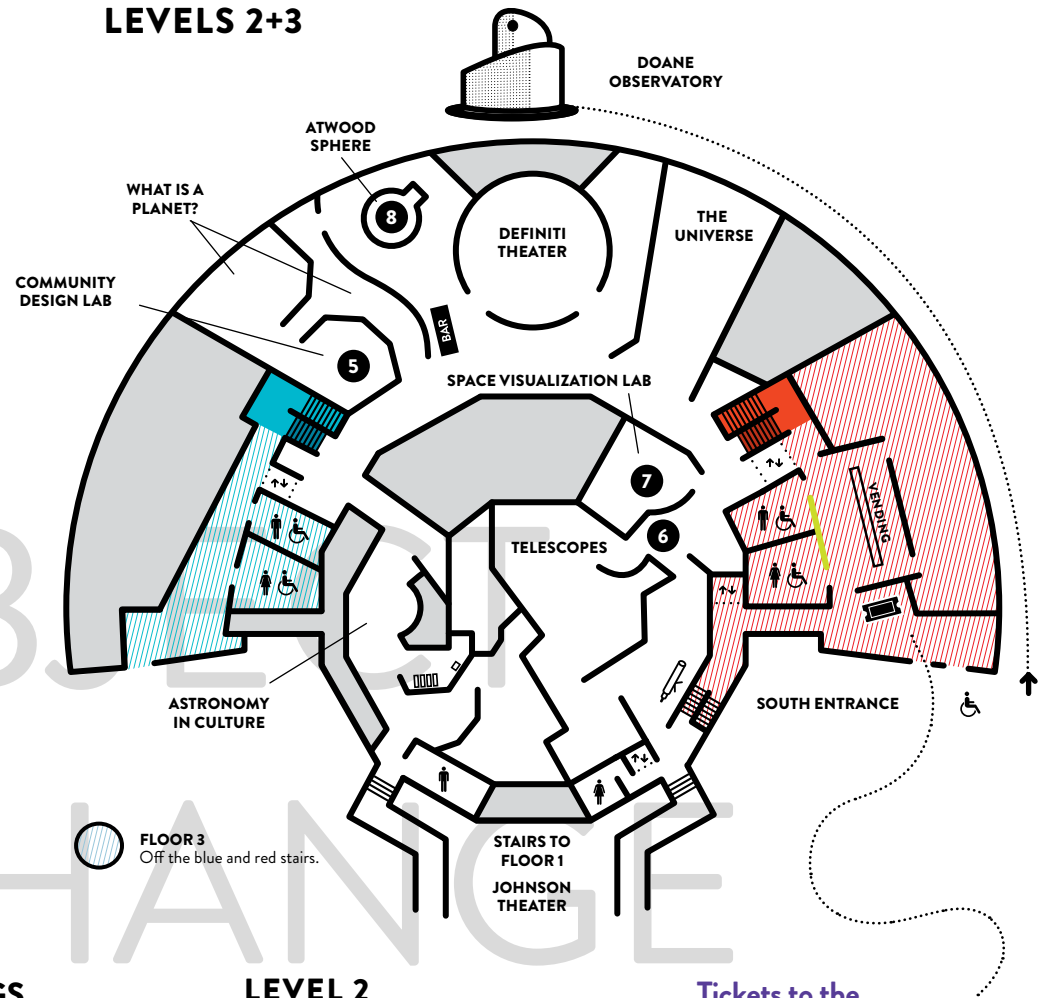
### ADLER EXCLUSIVE

- ① Beer Samples  
– with Empirical Brewery
- ② Smelly Space
- ③ Super Cool Science  
– Liquid Nitrogen Demo

### OTHER HAPPENINGS

- ④ Plant Chicago & Closed Loop Farms
- ⑤ (G)astro Landers!
- ⑥ Astronomy on Tap  
– Northwestern University
- ⑦ Astronomy Conversations  
– Space Visualization Lab
- ⑧ Atwood Sphere

## LEVELS 2+3



### LEVEL 2

*ASTRONOMY IN CULTURE (MEN'S)  
TELESCOPES (WOMEN'S)*

### LEVEL 3N (NORTH)

*RESTROOMS*

### LEVEL 3S (SOUTH)

*COAT & BAG CHECK  
RESTROOMS & VENDING*

### LEVEL 4

*ATM  
ADLER STORE – 6:30-10:30*

**Tickets to the  
Doane Observatory?**

Meet HERE 5 minutes before  
your scheduled time!